



## Rabbit anti JunB (pS259) Polyclonal Antibody

Alternative Name(s): Jun B proto-oncogene; AP-1

### Order Information

- **Description:** JunB (pS259)
- **Catalogue:** 500-11764
- **Lot:** See label
- **Size:** 100ug/200ul
- **Host:** Rabbit
- **Clone:** nan
- **Application:** IHC(P), WB, IP
- **Reactivity:** Hu, Ms

### **ANTIGEN PREPARATION**

A synthetic peptide of human JunB with a phosphorylation site Serine 259.

### **BACKGROUND**

Jun-B is a member of the activator protein-1 (AP-1) transcription factor family that has been implicated in a multitude of physiologic processes and tumorigenesis. Jun-B is a transcription factor involved in regulating gene activity following the primary growth factor response. It not only inhibits but also enhances the transcription of c-Jun targets in combination with c-Jun. For example, JunB can enhance the transcription of IL-8 in oral squamous cell carcinoma. JunB is also essential for multiple myeloma cell proliferation and drug resistance in the bone marrow microenvironment

### **PURIFICATION**

The Rabbit IgG is purified by site-modified Epitope Affinity Purification.

### **FORMULATION**

This affinity purified antibody is supplied in sterile Tris-buffered saline (pH7.2) containing antibody stabilizer

### **SPECIFICITY**

This antibody recognizes JunB with the phosphorylation site Serine 259. It does not cross-react with non-phosphospecific peptide.

### **STORAGE**

The antibodies are stable for 24 months from date of receipt when stored at  $-20^{\circ}\text{C}$  to  $-70^{\circ}\text{C}$ . The antibodies can be stored at  $2^{\circ}\text{C}$ - $8^{\circ}\text{C}$  for three month without detectable loss of activity. Avoid repeated freezing-thawing cycles.

### **APPLICATIONS/SUGGESTED WORKING DILUTIONS\***

- Western Blot: 0.1-1  $\mu\text{g/ml}$
- ELISA: 0.01-0.1  $\mu\text{g/ml}$
- Immunoprecipitation: 2-5  $\mu\text{g/ml}$
- IHC: 2-10  $\mu\text{g/ml}$
- Flow cytometry: Not tested
- Molecular Weight: 36.0
- Positive Control: Kidney Tissue
- Cellular Location: Cell Membrane

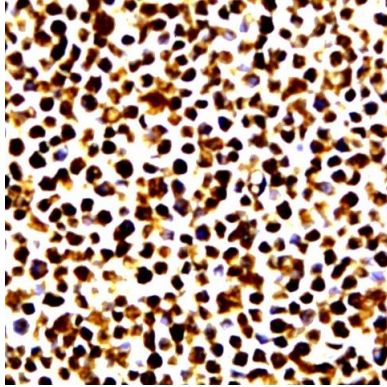
\*Optimal dilutions should be determined by researchers for the specific applications.

### **FOR RESEARCH USE ONLY.**

AbboMax, Inc 2528 Qume Drive, Suite 8, San Jose, California 95131, USA  
1 408-573-1898 (Tel). 1 408-573-1858 (Fax). [www.abbomax.com](http://www.abbomax.com) [info@abbomax.com](mailto:info@abbomax.com)



## DATA ATTACHMENTS



Immunohistochemistry: The whole cell pallet Hela (FFPE) stained with Rabbit anti-Jun-b(pS259) (Cat# 500-11764) at 1:200 for 10 min @ RT. Staining of formalin-fixed tissue requires boiling tissue sections in 10 mM Citrate Buffer, pH 6.0 for 10 min followed by cooling at RT for 20 min.

## REFERENCES

### FOR RESEARCH USE ONLY.

AbboMax, Inc 2528 Qume Drive, Suite 8, San Jose, California 95131, USA  
1 408-573-1898 (Tel). 1 408-573-1858 (Fax). [www.abbomax.com](http://www.abbomax.com) [info@abbomax.com](mailto:info@abbomax.com)